

Wiedemeyer

Your Partner for Logistics

The **disassembly** and **reassembly** of large plants and machinery up to 250 tons is one of our specialist areas and core competencies.

In a variety of installation projects, we use experienced specialists (e.g. metalworkers or electricians) and all related utilities such as masts, crane trucks up to 1000 tons, forklifts, tools, etc.

Whether

- in the context of a **modernization of your machinery**,
- in **relocations** or
- in **liquidations** –

we are your partner for

- **professional disassembly and reassembly**, for the
- **safe transport** and for the
- **(intermediate) storage** in our warehouses with over 20,000 m² of storage area and cranes with lifting capacities up to 2 x 63 tons.



Below we have summarized some impressions of a sample project.



Dismantling, transportation and storage of 4 presses with a weight of 40 tons

Within 40 hours this contract has been properly carried out – to the complete satisfaction of our customer. Look for yourself...

Bernd Wiedemeyer
+49 2335 9193 18/60
bw@wiedemeyer-spedition.de

Matthias Wiedemeyer
+49 2335 9193 27/28
mw@wiedemeyer-spedition.de

Jürgen Geppert
+49 2335 9193 21/26
jg@wiedemeyer-spedition.de

Wiedemeyer

Your Partner for Logistics



Arrival at the customer in the Sauerland



4 presses with a weight of 40 tons each



Dismantling of the presses



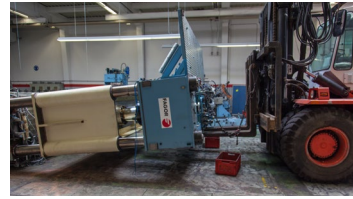
Use of a heavy duty forklift



Folding the presses



We all need a little fun!



Preparation of the presses for the transport I



Preparation of the presses for the transport II



Transport of the presses through the workshops I



Transport of the presses through the workshops II



Done!



Use of a heavy-duty crane for loading



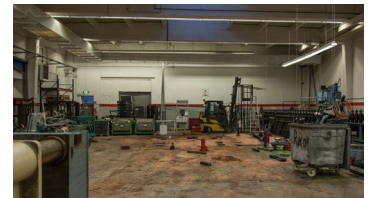
Preparation of the trailer for the transportation



Loading of the presses



Securing the load



All presses are loaded



Departure at the customer and arrival at the warehouse



Preparation of unloading of presses



Unloading of the presses



Presses are stored – mission accomplished